

# Views of Payson Sheets' Research



Small eruption, Arenal Volcano, Costa Rica



Arenal's stratigraphy: 10 major  
Explosive eruptions in 4000 years,  
Each with a soil developed  
On top, with ecologic  
Recovery and human recolonization.



Tronadora Vieja site. Begins c. 3000 BC. Arenal volcano in distance.



Chalchuapa lake stratigraphy, 1200 BC to Ilopango tephra c AD 400.

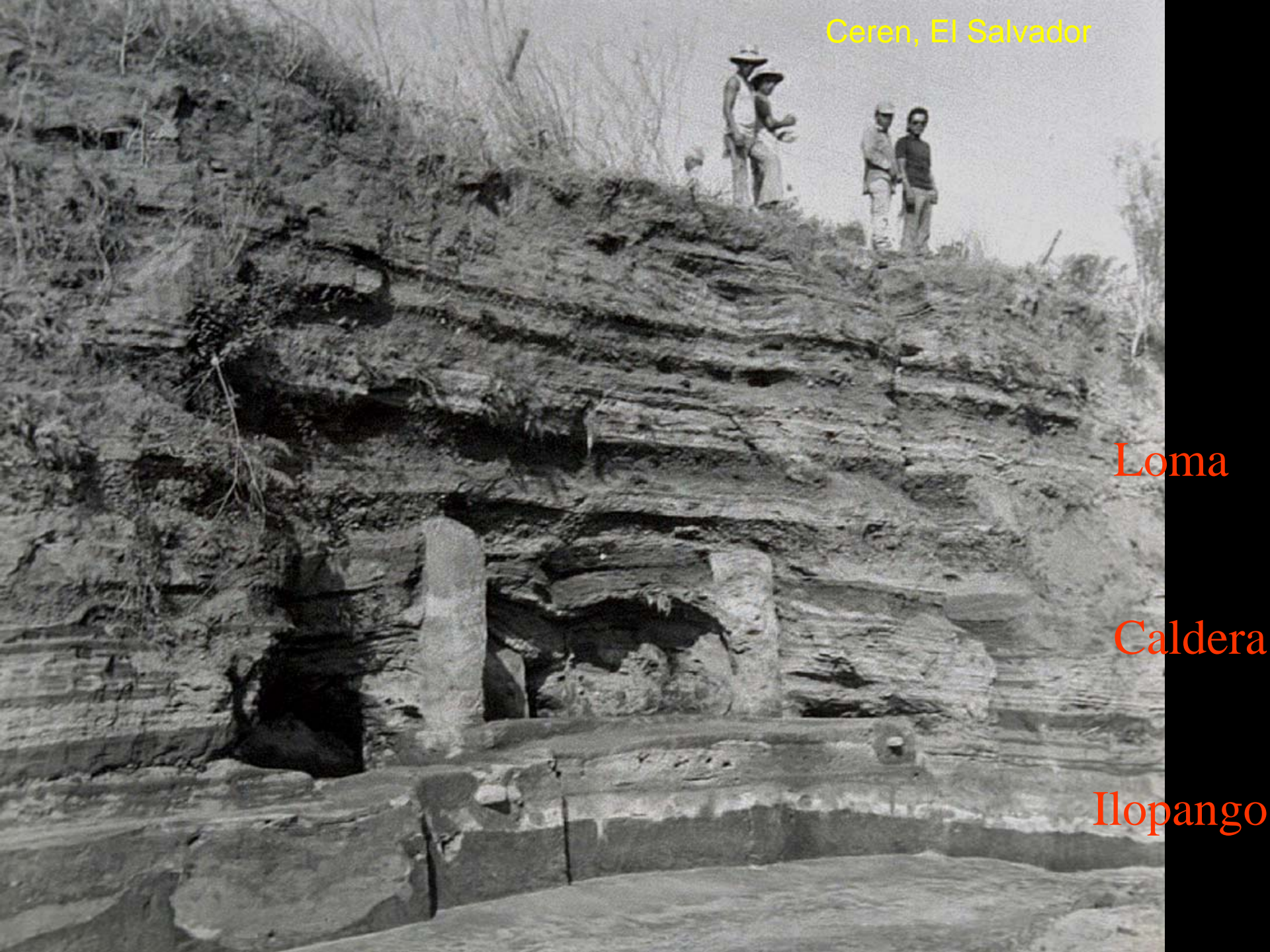


Caldera of Lake Ilopango, source  
Of the TBJ tephra, c. AD 400.  
San Salvador in background.



Cuchilla site. 42 km from Ilopango. Tephra c. 3 m deep.

Ceren, El Salvador



Loma

Caldera

Ilopango